



PATEK PHILIPPE
GENEVE

Press Release

Patek Philippe, Geneva
October 2022

Ref. 7968/300R-001 Aquanaut Luce “Rainbow” chronograph

The very first chronograph model of the Aquanaut Luce collection shines in the colors of the rainbow made of baguette diamonds and baguette sapphires.

Patek Philippe has extended its feminine line, presenting the first model with a chronograph movement for its contemporary casual chic Aquanaut Luce collection. Incidentally, this new watch is the first self-winding Patek Philippe ladies’ chronograph. The manufacture leveraged its creativity and the know-how of its master jewelers to transform this rose-gold timepiece into a precious treasure with a fresh and inimitable style.

Since it was launched in 2004, the Aquanaut Luce (as a ladies’ version of the Aquanaut that was introduced in 1997) has successfully wooed all the women who appreciate its unique style and elegance for any occasion. The fire of diamonds on its bezel gave it the name “Luce” (Italian for light) and today adorns three steel models with quartz movements as well as with dials and straps in black (Ref. 5267/200A-001), matte white (Ref. 5267/200A-010) or khaki green (Ref. 5267/200A-011) as well as a rose-gold version with the self-winding caliber 26-330 S C and a dial/strap in matte white (Ref. 5268/200R-001).

In 2021, Patek Philippe endowed the Aquanaut Luce collection with a second time zone (Travel Time), its first additional function. The result is a very convenient and elegant travel watch with an innovative quartz movement that allows the setting of the respective local time with the crown. It stands out with a rose-gold case and a dial and strap in matte white (Ref. 5269/200R-001 Aquanaut Luce Travel Time).

A double debut in Patek Philippe’s ladies’ collections

Now, Patek Philippe is taking a step further and launching a second additional function in the Aquanaut Luce collection: a chronograph. In 2009, the manufacture first presented its new proprietary manually wound chronograph movement CH 29-535 PS with classic architecture in a cushion-shaped ladies’ watch case (Ref. 7071 Ladies First Chronograph). Today, this new movement ticks in the very feminine Ref. 7150/250R-001 Calatrava ladies’ chronograph. In turn, the new Aquanaut Luce is the first Patek Philippe ladies’ wristwatch with a self-winding chronograph movement – an ideal companion for this sporty elegant and casual timepiece.

The new Ref. 7968/300R-001 Aquanaut Luce “Rainbow” chronograph is equipped with the self-winding caliber CH 28-520, a vertical disc clutch, and a large 60-minute counter at 6 o’clock. Thanks to this modern clutch that operates with minimal wear and without affecting precision and power reserve, the sweep chronograph hand can also be used as a constantly running seconds hand. With the pusher at 4 o’clock, the flyback function makes it possible to start a new measurement at any time, even if the sweep chronograph hand is already measuring the duration of an event or if it is being used as a constantly running seconds hand.

PATEK PHILIPPE SA GENEVE

Chemin du Pont-du-Centenaire 141 – 1228 Plan-les-Ouates
P.O. Box 2654 – CH – 1211 Geneva 2 – Switzerland
Tel. + 41 22 884 20 20 – Fax + 41 22 884 25 47 – www.patek.com



The magic of the jeweler's art

In addition to the wreath of brilliant-cut diamonds, the Aquanaut Luce has already been launched in several jewelry versions in which the inimitable case design is emphasized with a precious setting of gems, forming a uniquely radiant pairing. The Ref. 5062/450R-001 Aquanaut Luce haute joaillerie combines some of the most complex gemsetting techniques (snow setting, invisible setting), while the Ref. 5072R-001 Aquanaut Luce haute joaillerie features a bezel decorated with baguette diamonds and a lacquered and engraved mother-of-pearl dial showing an ingenious checkerboard effect.

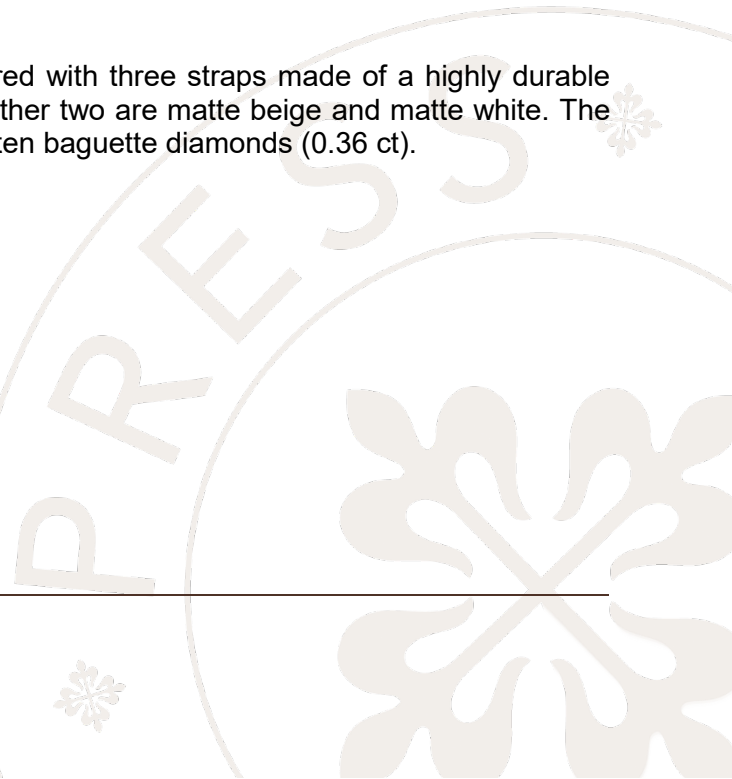
For the first Aquanaut Luce with chronograph, Patek Philippe chose a totally new path that plays with gems of different colors. This gemsetting format was already used in the feminine models such as the Ref. 7002/450G-013 (2016) Haute Joaillerie Minute Repeater "Symphony of the Four Seasons": its dial in diamond pavé was sprinkled with color sapphires and in the Ref. 4898/1450G-010 "Diablotine" haute joaillerie model inspired by the art deco style (launched on the occasion of the Patek Philippe Grand Exhibition in New York 2017). Its livery consists of 2059 gems of various colors.

For the new Ref. 7968/300R-001 Aquanaut Luce "Rainbow" chronograph, Patek Philippe chose a true rainbow of colors. The octagonal bezel is adorned with two rows of baguette-cut gems. The inner row consists of 40 flawless rare white Top Wesselton diamonds (2.05 ct). The outer one, slightly angled, sports 40 sapphires in the colors of the rainbow (2.31 ct). Each of them was hand-picked to assure the perfect transition from one nuance color to the next. For this two-row arrangement, Patek Philippe selected the elaborate "invisible setting" technique in which the gems are horizontally notched on the lower facet. They can then be set on "metal rails" that are invisible from the outside.

The medley of colors continues on the mother-of-pearl dial engraved with the typical Aquanaut motif. The twelve applied hour markers in rose gold are baguette sapphires (0.31 ct) with nuance colors coordinated with those on the dial. Luminous baton hands in rose gold make the hours and minutes quickly and easily legible.

The case has a diameter of 39.9 mm. The two chronograph pushers are manually polished and satin-finished by the manufacture's artisans. In full compliance with the directives of the Patek Philippe Seal, the caliber CH 28-520 movement is also elaborately finished. It can be admired through the sapphire-crystal case back.

To address all wishes and moods, this watch is delivered with three straps made of a highly durable composite material – one is red (original version), the other two are matte beige and matte white. The patented Patek Philippe fold-over clasp is adorned with ten baguette diamonds (0.36 ct).





Technical data

Ref. 7968/300R-001 Aquanaut Luce “Rainbow” chronograph

Movement:	Caliber CH 28-520 Self-winding mechanical movement. Flyback chronograph with 60-minute counter.
Diameter:	30 mm
Height:	5.3 mm
Number of parts:	259
Number of jewels:	32
Power reserve:	Min. 45 hours, max. 55 hours
Winding rotor:	Central rotor in 21K gold, unidirectional winding
Frequency:	28,800 semi-oscillations per hour (4 Hz)
Balance:	Gyromax [®]
Balance spring:	Spiromax [®] (in Silinvar [®])
Balance spring stud:	Adjustable
Functions:	Two-position crown: <ul style="list-style-type: none"> • Pushed home: To wind the watch • Pulled out: To set the time
Displays:	With hands: <ul style="list-style-type: none"> • Center hours and minutes • Sweep chronograph/seconds hand • 60-minute chronograph counter at 6 o'clock
Pushers:	<ul style="list-style-type: none"> • Chronograph start and stop at 2 o'clock • Chronograph reset and flyback function at 4 o'clock
Hallmark:	Patek Philippe Seal
Features	
Case:	18K rose gold Bezel set with color baguette sapphires and diamonds Sapphire-crystal case back Water resistant to 30 m (3 bar)
Case dimensions:	Diameter (10 to 4 o'clock): 39.9 mm Width (9 to 3 o'clock incl. crown): 42.02 mm Length across lugs: 47.24 mm Height: 10.37 mm Width between lugs: 21 mm
Dial:	White mother-of-pearl with engraved Aquanaut motif Applied Arabic numerals in 18K rose gold



12 applied hour markers in 18K rose gold with color baguette sapphires
Baton-style hour and minute hands in 18K rose gold with Superluminova®
coating
Chronograph/seconds hand, arrow-shaped, counterbalanced, rose gilt
steel
Baton-style 60-minute counter in rose gilt brass

Strap: Composite material, water- and wear-resistant, UV-resistant, relief
checkerboard pattern to match the dial
The watch comes with three strap colors: Red (original), matte beige and
matte white (additional straps)
Patented fold-over clasp in 18K rose gold with baguette diamonds, secured
with four separate catches

Precious stones: 40 color baguette sapphires (2.31 ct) on the bezel
40 baguette diamonds (2.05 ct) on the bezel
12 color baguette sapphires (0.31 ct) on the dial markers
10 diamonds (0.36 ct) on the clasp
Total: 52 color baguette sapphires (2.62 ct) and 50 baguette diamonds
(2.41 ct)

